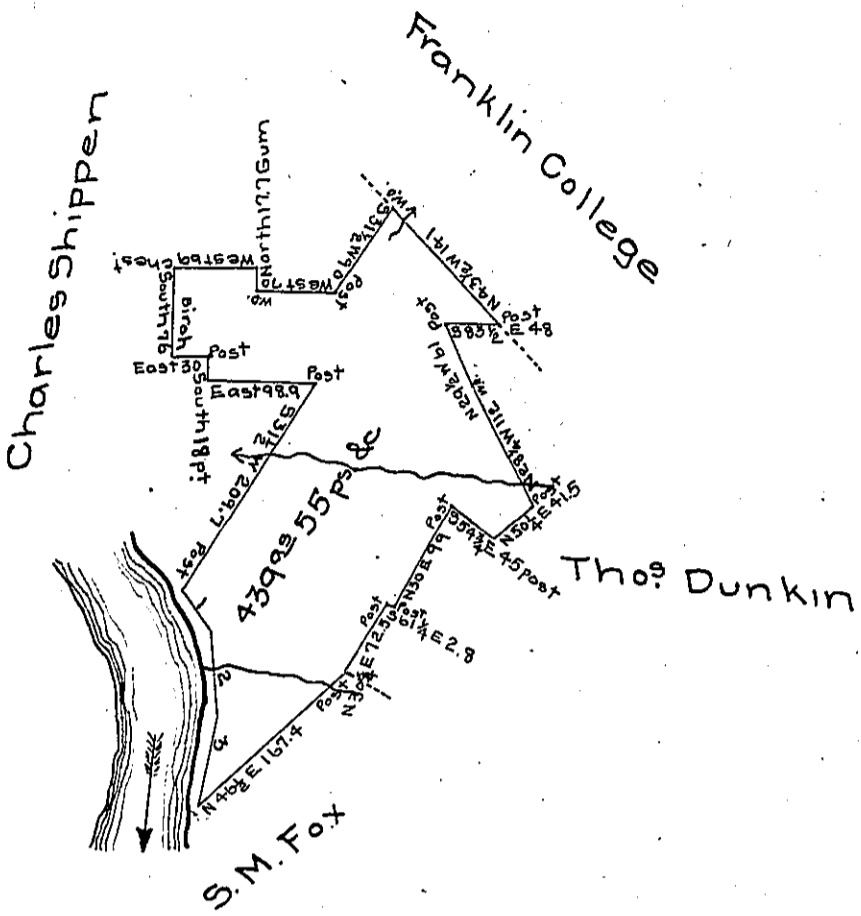


Courses and distances
 down river from Post
 №1 S 36 1/2 E 40
 " 2 S 84 E 70
 " 3 S 10 W 79 Hemk



Draft of a tract of land situate in Richland township Venango county, East of, and adjoining the Allegheny river. Surveyed 25th June 1850 in pursuance of a warrant granted to James J. M^o Ginnis dated 3rd September 1849.

Charles H. Heydrick D.S.

To John Laporte Esqr }
 Sur^r Gen!

IN TESTIMONY that the above is a copy of the original remaining on file in the Department of Internal Affairs of Pennsylvania, made conformably to an Act of Assembly approved the 16th day of February, 1833, I have hereunto set my Hand and caused the Seal of said Department to be affixed at Harrisburg, this thirtieth day of January 1906

Loac R. Brown
 Secretary of Internal Affairs.